



# THE WELLNESS CITY<sup>®</sup>

India's First Bioclimatic Township

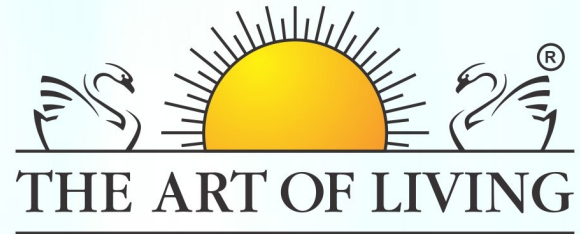


**BLESSED BY**  
**GURUDEV**  
**SRI SRI RAVI SHANKAR JI**

**AND WE WILL**  
**CONTINUOUSLY SEEK HIS**  
**BLESSINGS FOR ALWAYS.**



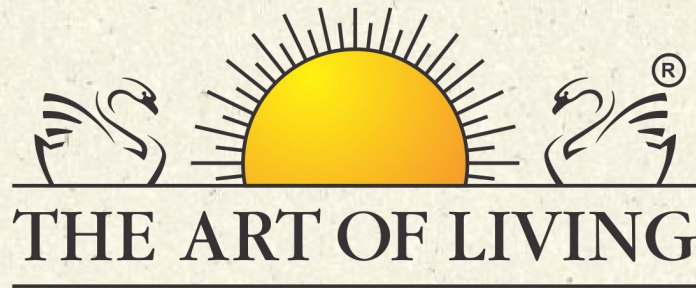




## **NORTH INDIA'S LARGEST ART OF LIVING ASHRAM AT THE WELLNESS CITY**







**SPREAD ACROSS  
SPRAWLING 20 ACRES,  
THE ASHRAM WILL ATTRACT  
FOLLOWERS GLOBALLY**

---

Meditation Hall | International School | Ayurveda College  
Ayurveda Hospital | Panchkarma Centre





# ONE OF THE WORLD'S LARGEST GOOD LIVING FOUNDATIONS

**156**

countries where  
art of living has  
followers

**10,000+**

centres  
worldwide

**450**

millions lives  
touched



A THRIVING  
ATMOSPHERE FOR THE

# 8 PILLARS OF WELLNESS





# **INTERNATIONAL & WORLD ACCLAIMED ARCHITECTS**



**OMAR K. RABIE**  
**ARCHITECT, EGYPT**



**NICHOLAS DE MOBCHAUX**  
**ARCHITECT, USA**





**OMAR K. RABIE**  
PRINCIPAL ARCHITECT

- » Omar is an International Union of Architects (UIA) awarded designer.
- » An expert in bioclimatic design and architecture.
- » His philosophy is to design with nature - to create structures that do not interfere with the natural flow.
- » Is globally renowned for working in challenging environments, with multiple accolades and felicitations.
- » Omar Rabie is the founder of Unitary, and a lecturer at the Auroville Earth Institute.



# BIOCLIMATIC DESIGN

CLIMATE ADAPTIVE BUILDINGS

## LOW ENERGY USE COMFORT MULTI-SCALING

Sustainable housing has the potential to produce good quality housing at a price that is affordable both in the short and long term.

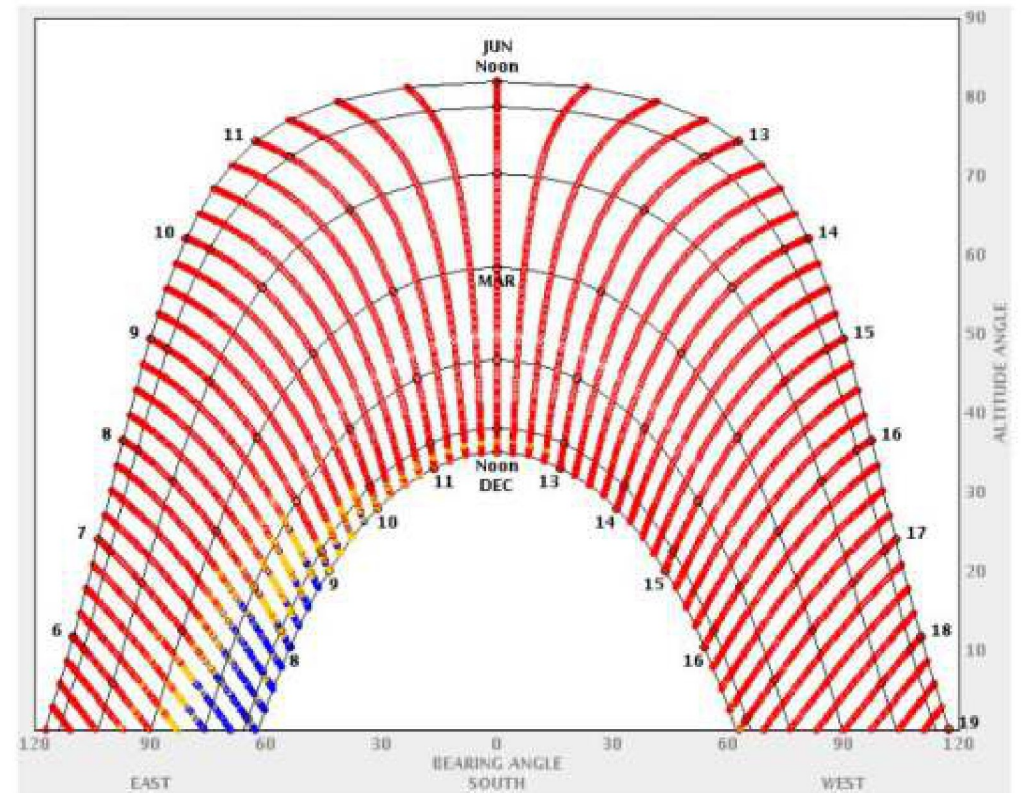
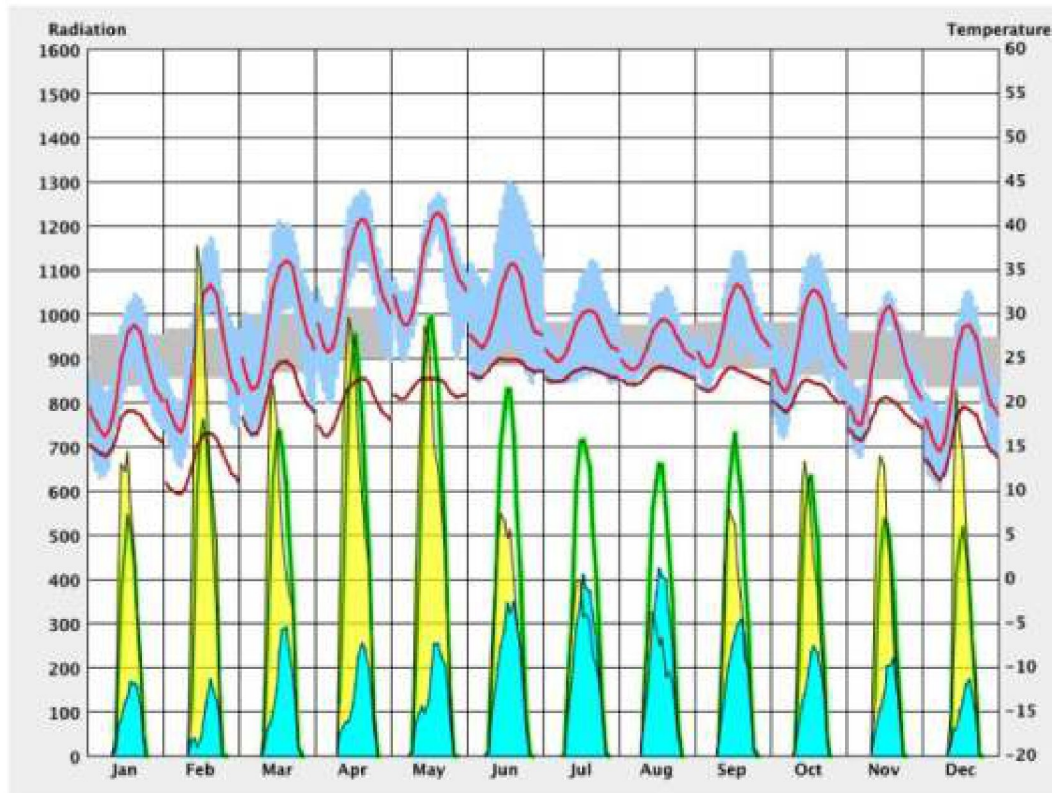


**HEATING, VENTILATION AND  
COOLING SYSTEM EFFICIENCY**

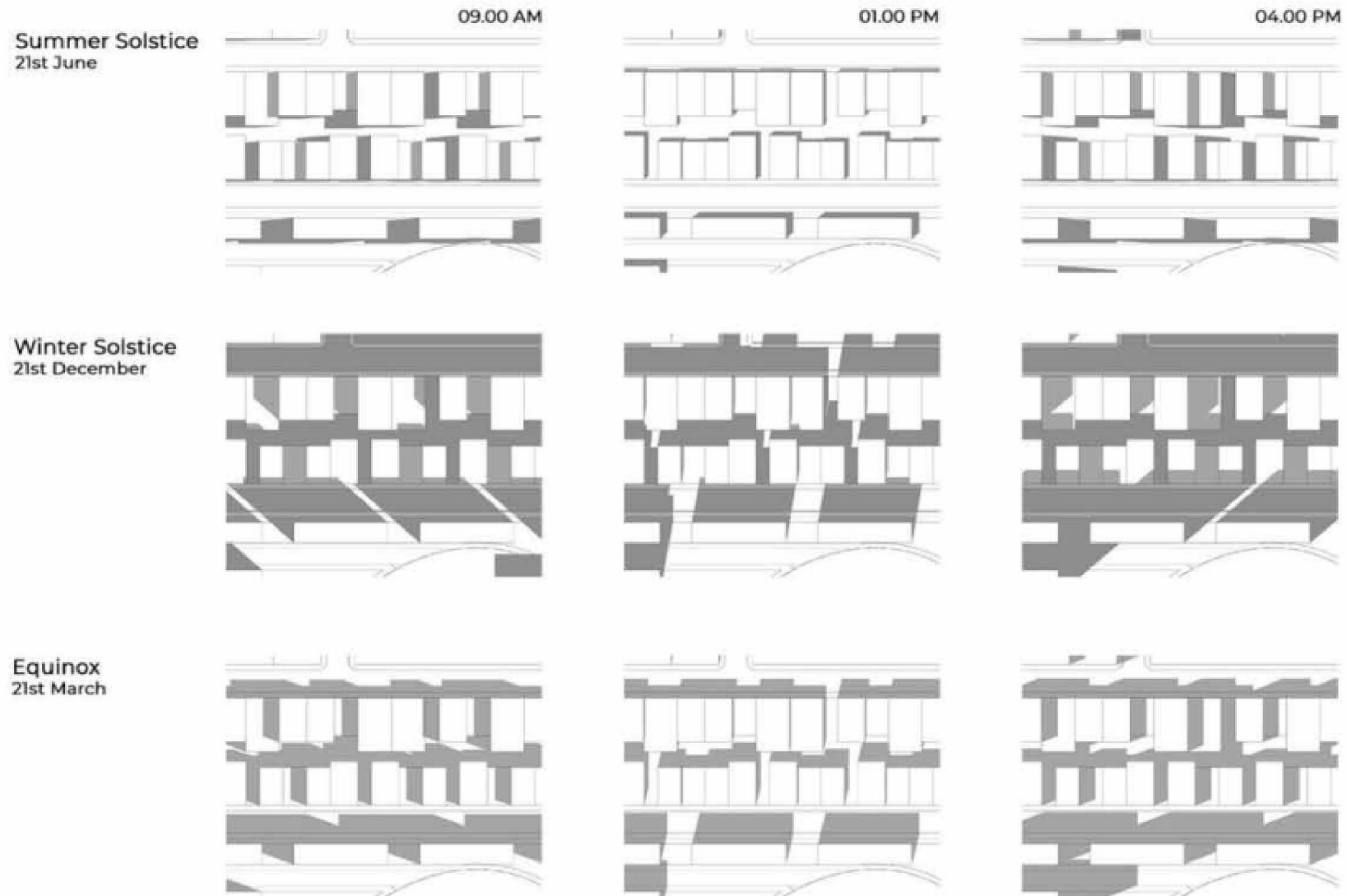
**RAINWATER COLLECTORS**

**ECO FRIENDLY GARDENS AND  
LANDSCAPES**

















# THE WELLNESS CITY<sup>®</sup>

India's First Bioclimatic Township

## 110 ACRES TOWNSHIP



**RESIDENTIAL  
PLOTS**



**APARTMENTS**



**HI-STREET  
COMMERCIAL**



**PRIME ZONE  
BUNGALOWS**



**FARM HOUSES**



# LOCATION MAP



Architectural Presentation for Training Purpose Only.



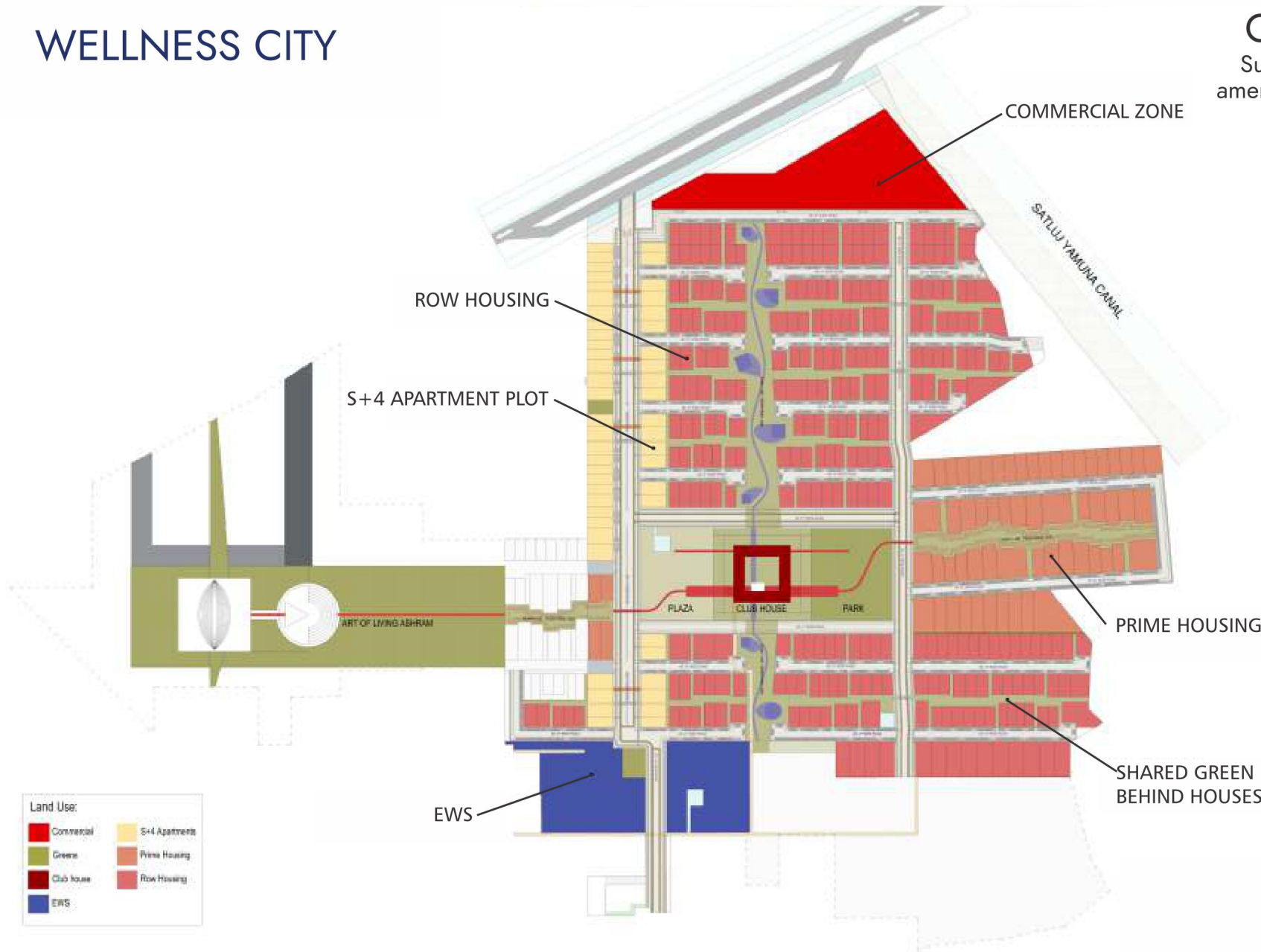
# CONVENIENTLY LOCATED ON CHANDIGARH-PATIALA HIGHWAY (NH-64) A STONE THROW DISTANCES FROM THE TRICITY





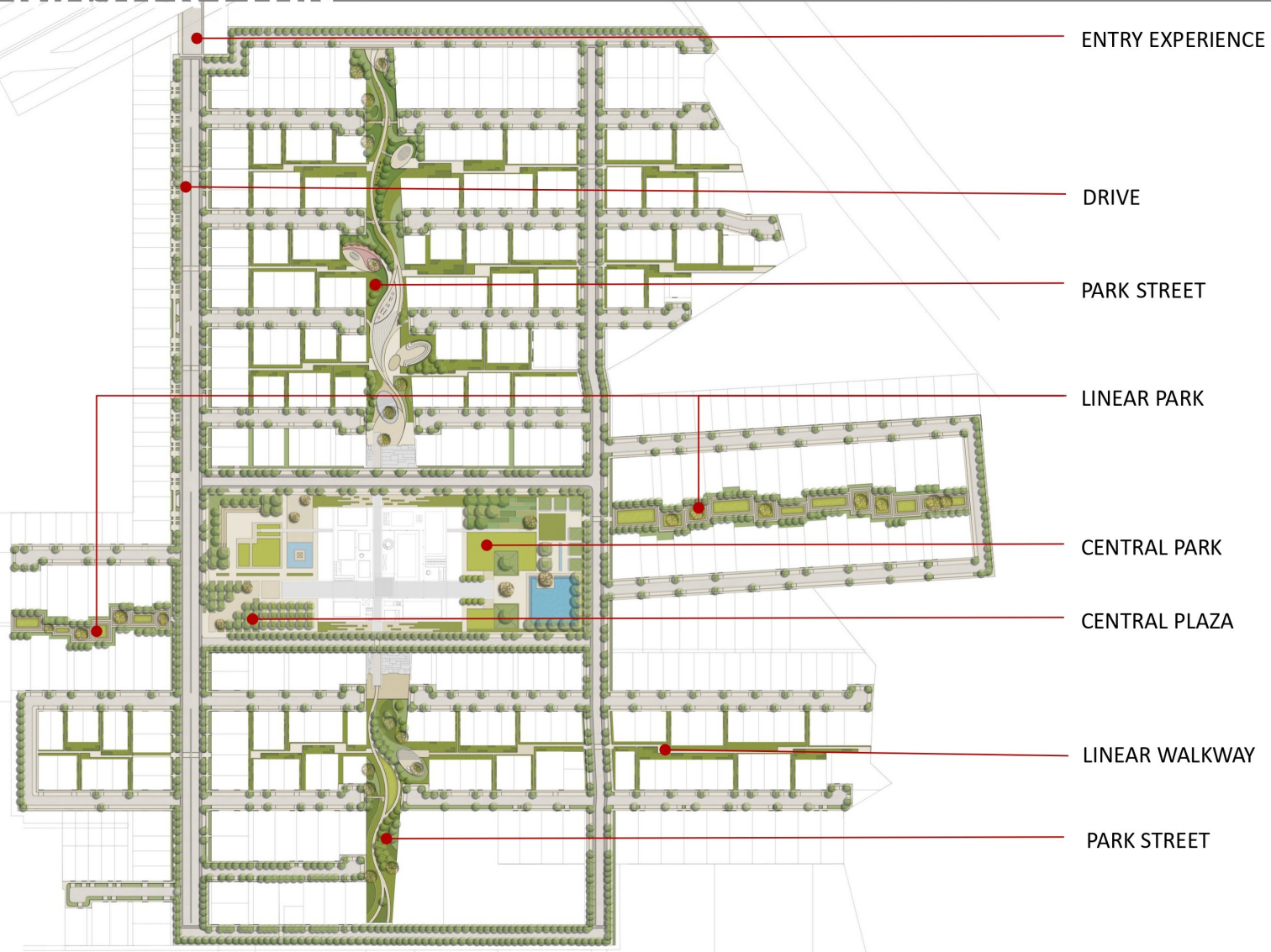
# WELLNESS CITY

**Conceptual Plan**  
Subject to final approvals & amendments as per Authority.





# MASTER PLAN





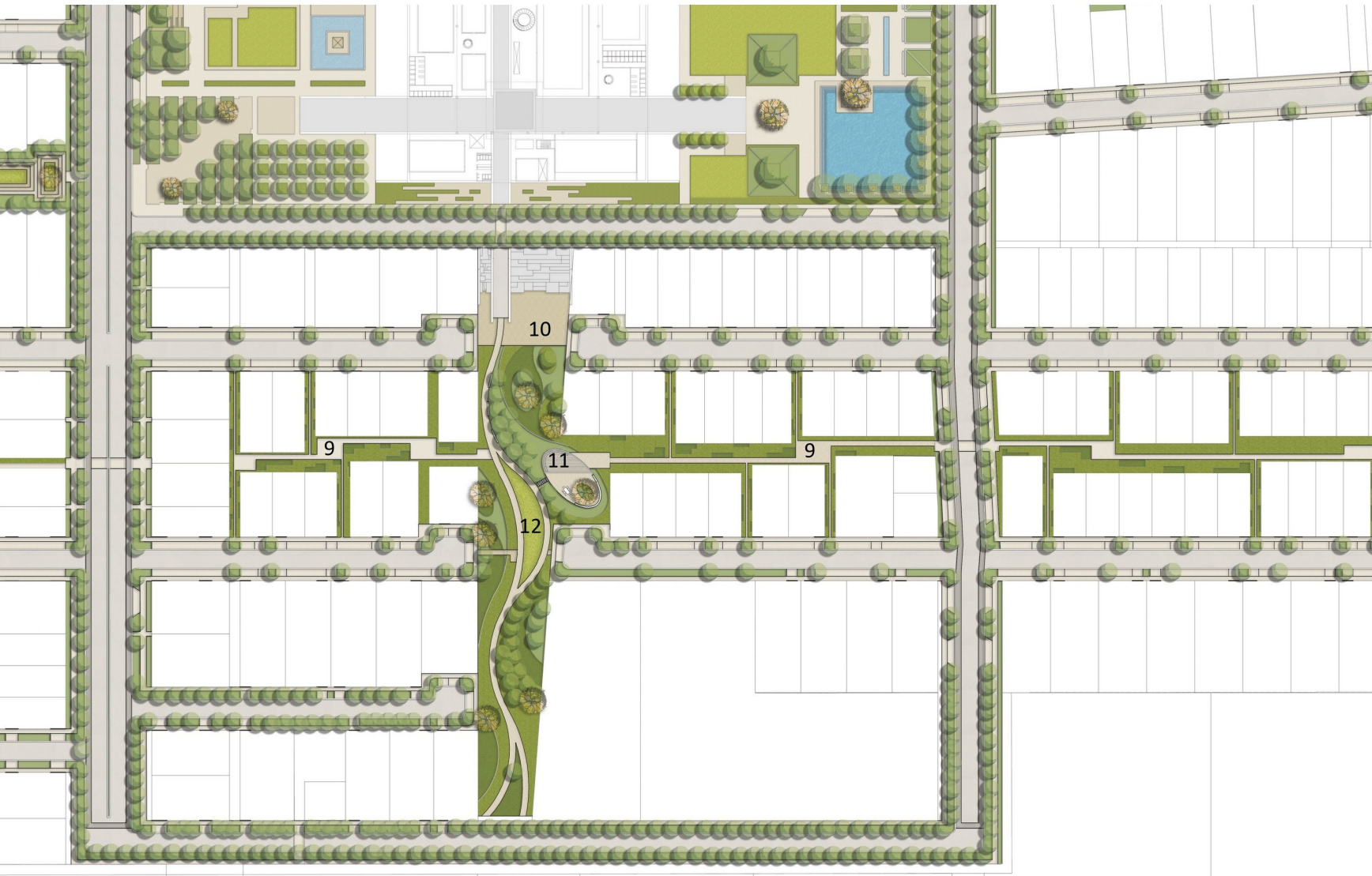
# CURVILINEAR PARKWAY



1. Primary Walkway
2. Children's Play Equipment
3. Sand Pit
4. Water Jet Play
5. Amphitheatre
6. Senior Citizen and Reflexology area
7. Outdoor Gym Equipment
8. Reading pod
9. Secondary linear Walkway



## CURVILINEAR PARKWAY



- 9. Linear Walkway
- 10. Outdoor seating
- 11. Pavilion
- 12. Yoga Lawn



# VISUAL REFERENCES



Outdoor dining



Reading corner



Gravel court



Planted beds



# VISUAL REFERENCES



Primary walkway with grass swaths



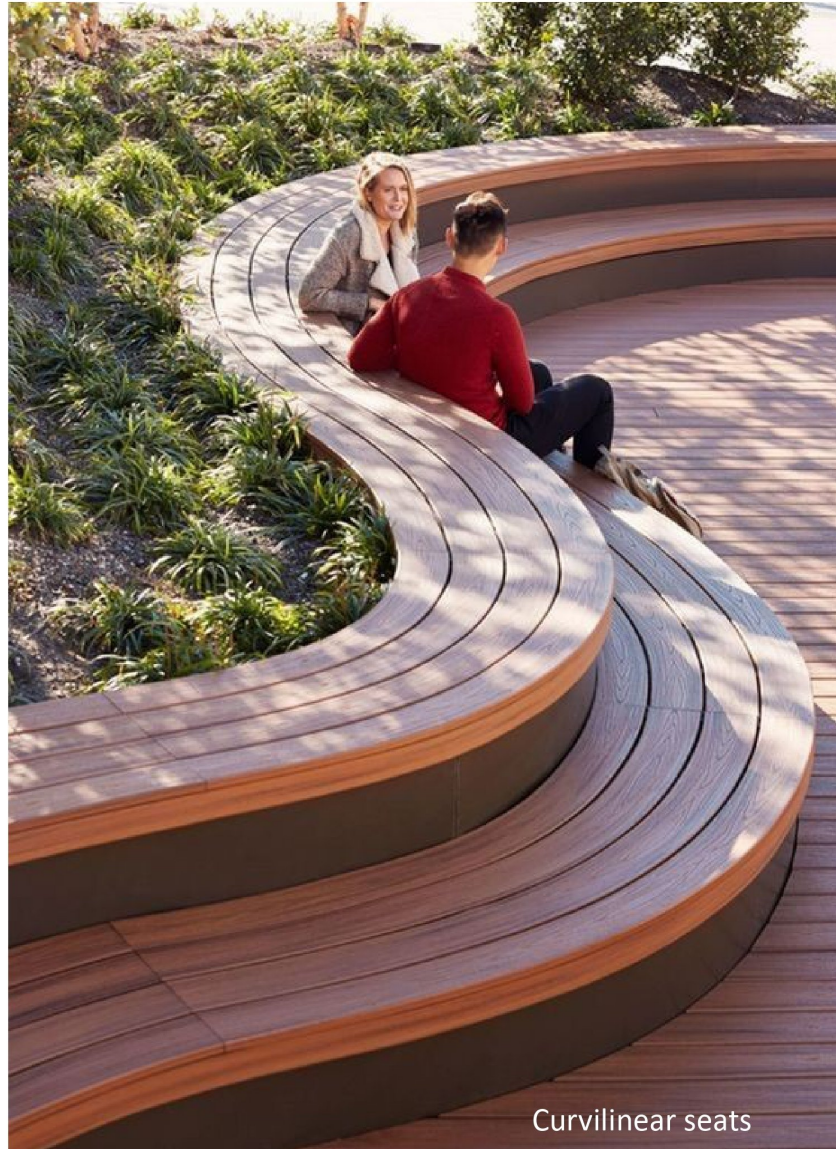
Stepped seating



Street benches with plantation behind



# VISUAL REFERENCES





## VISUAL REFERENCES



Kids' lawn



Kids' lawn



Kids' Play Area



Curved seat at the end of the lawn



Climbing wall

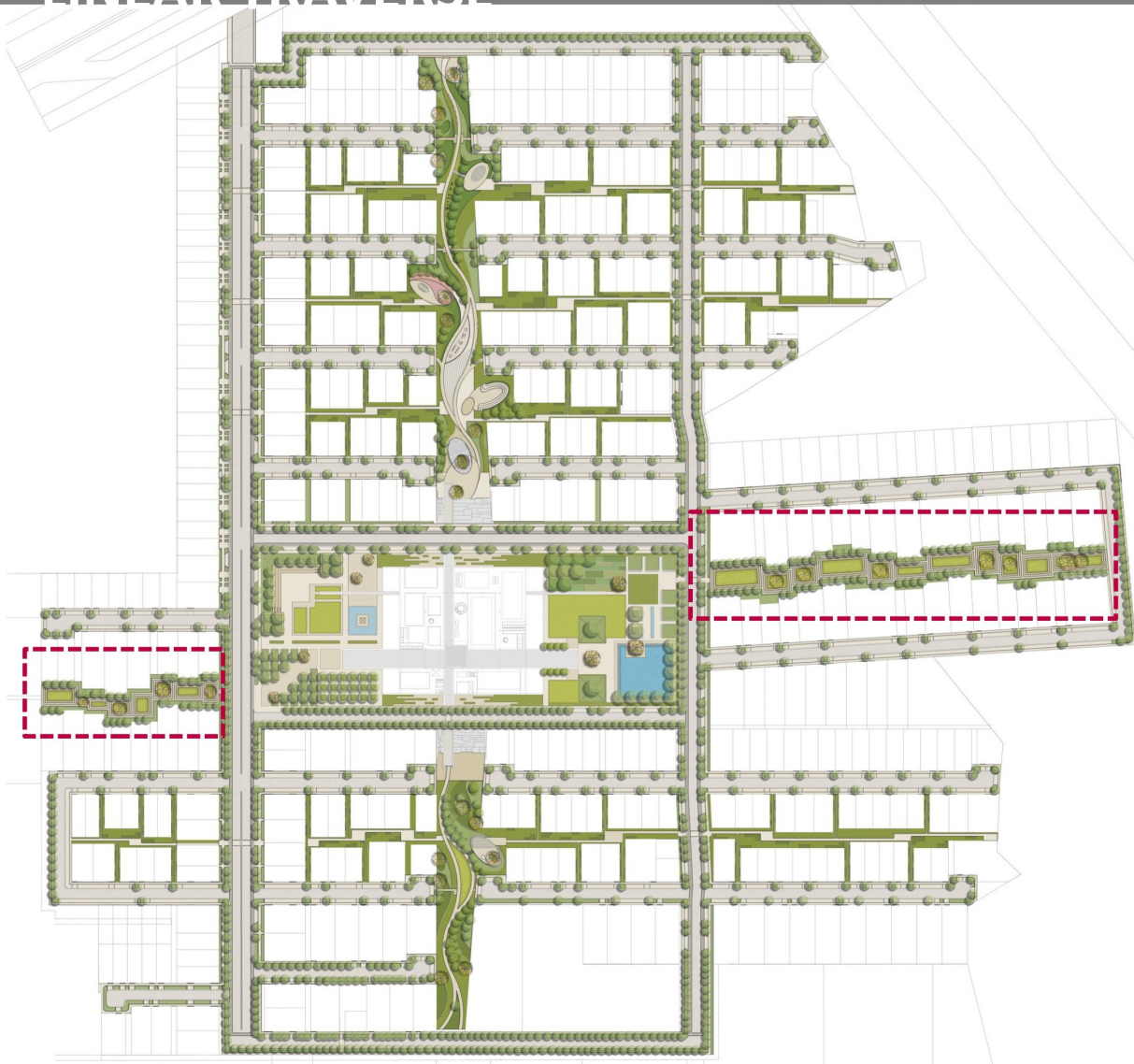


# VISUAL REFERENCES





# LINEAR TRAVERSE





# LINEAR TRAVERSE



- 1. Linear Plaza
- 2. Stepped Seating
- 3. Planted edges

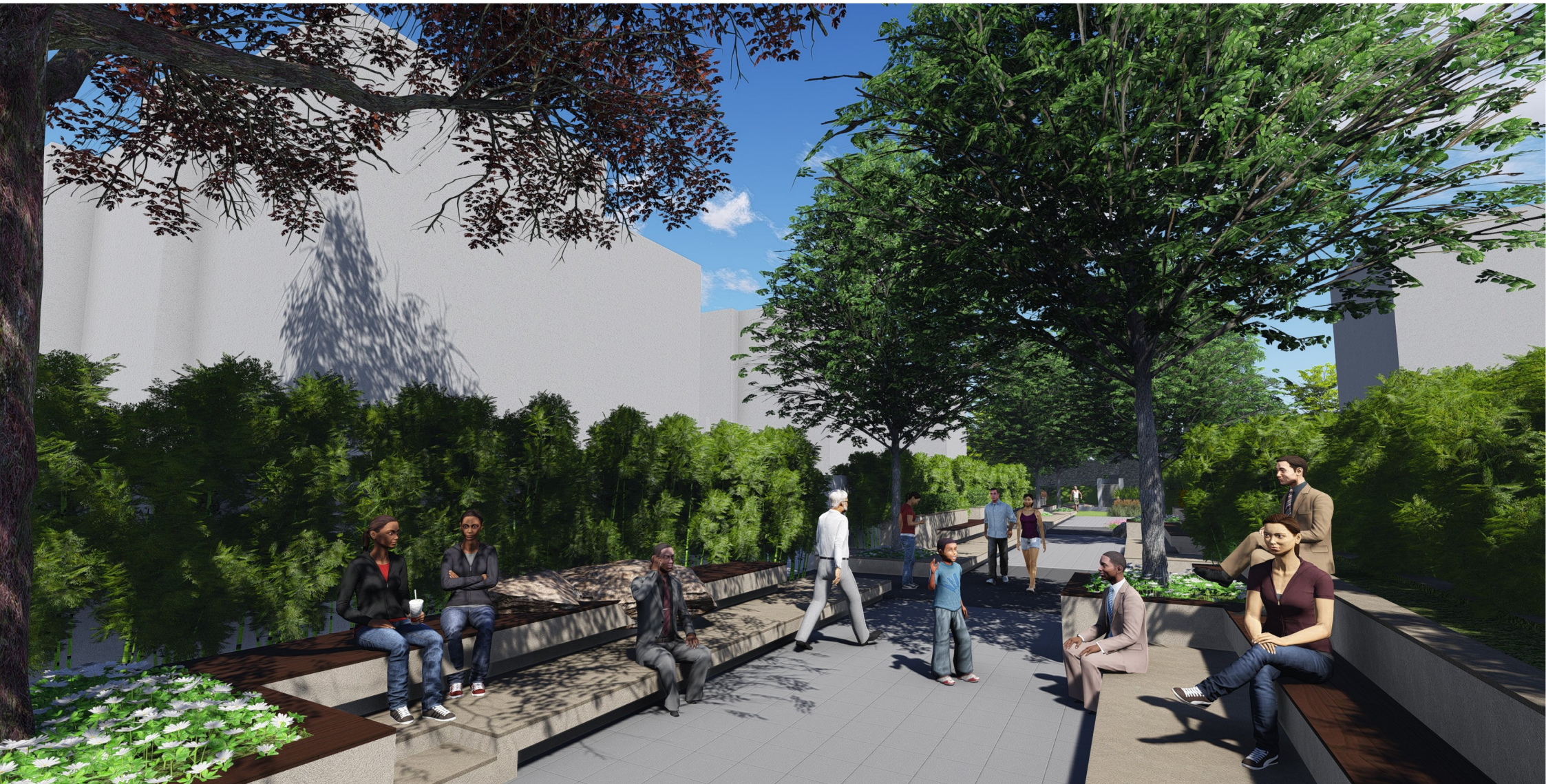


# VISUAL REFERENCES



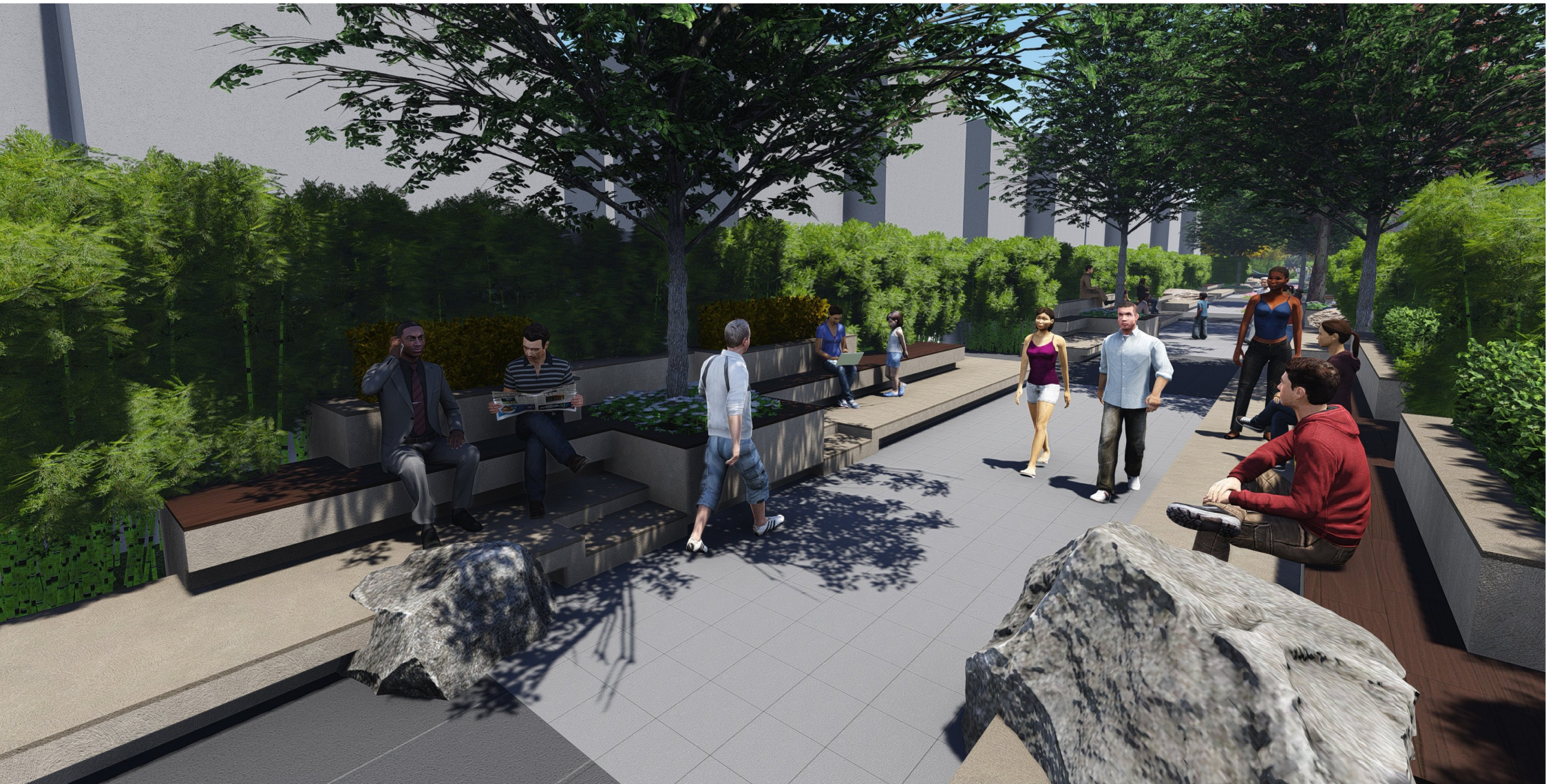


# VISUAL REFERENCES





# VISUAL REFERENCES



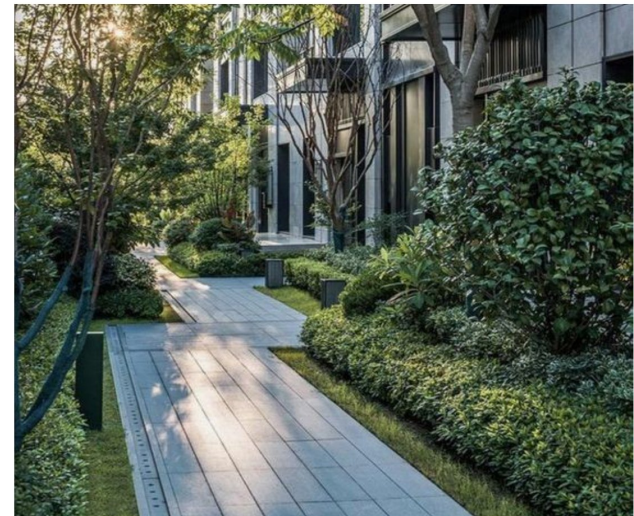
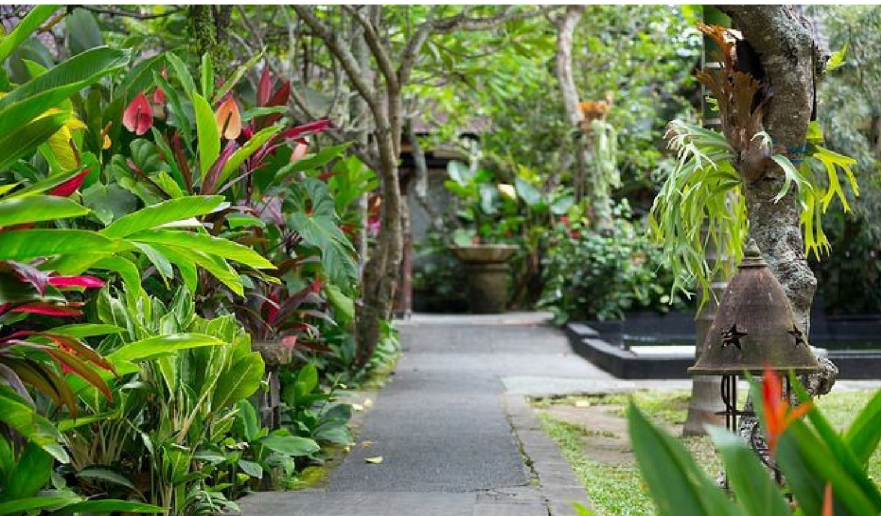
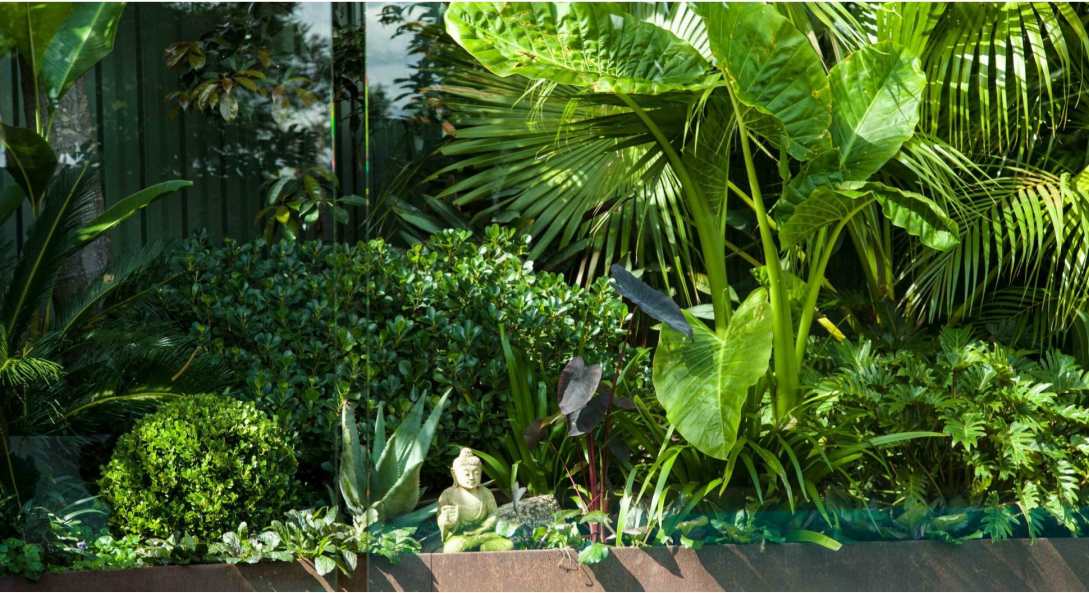


## VISUAL REFERENCES



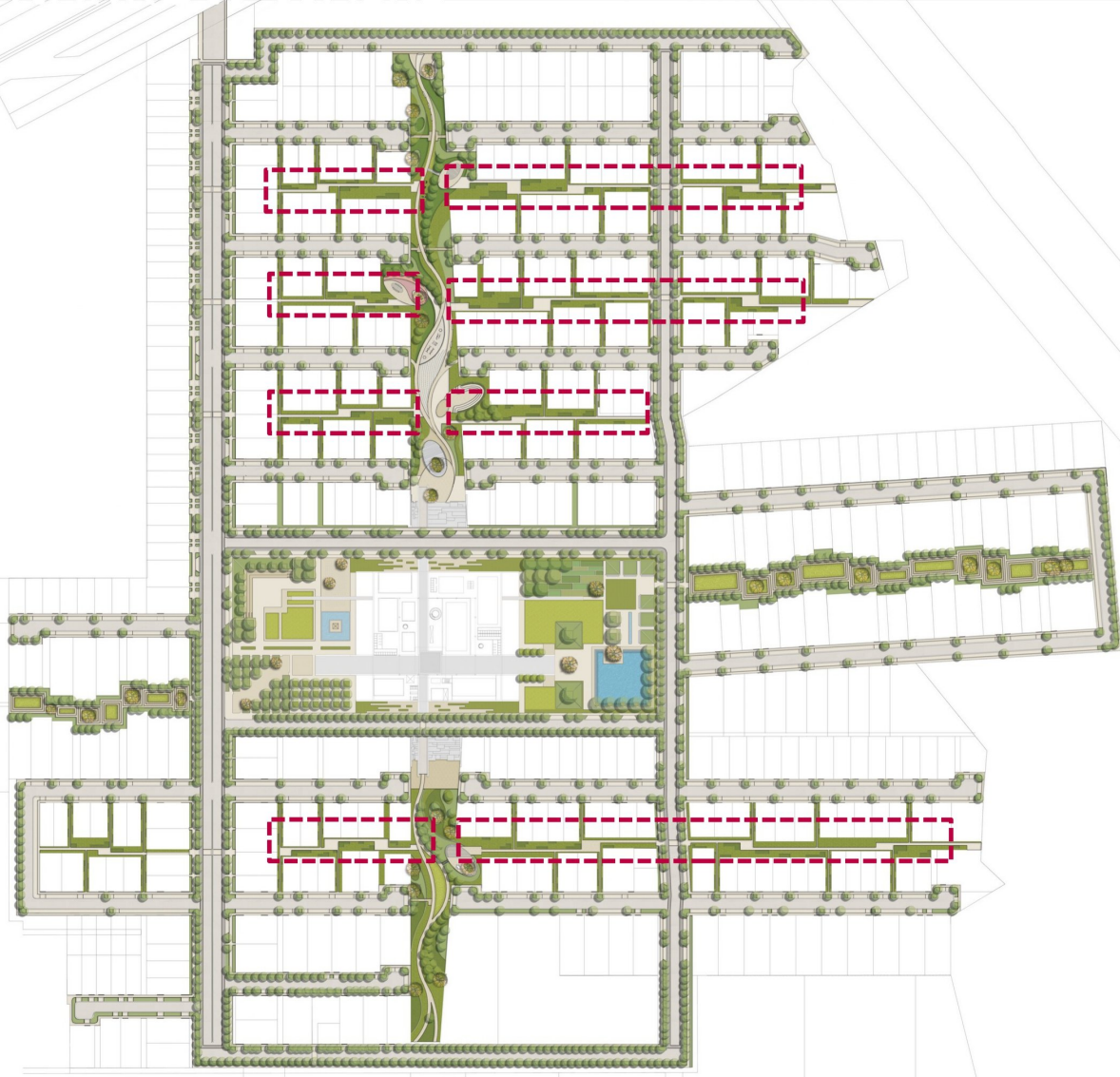


## VISUAL REFERENCES



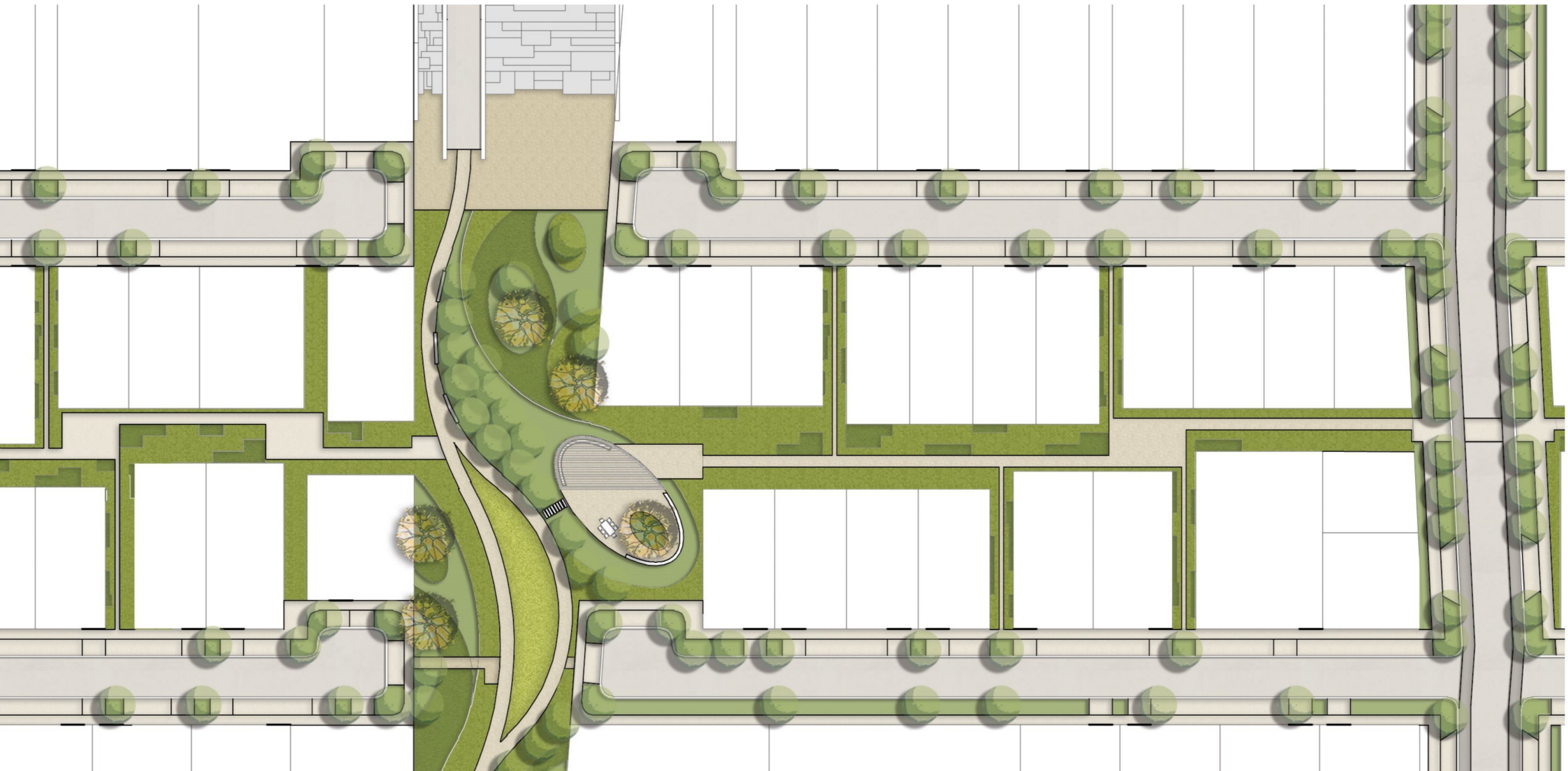


# NARROW WALKS





## NARROW WALKS





## VISUAL REFERENCES



Linear Walkway



## VISUAL REFERENCES





## VISUAL REFERENCES



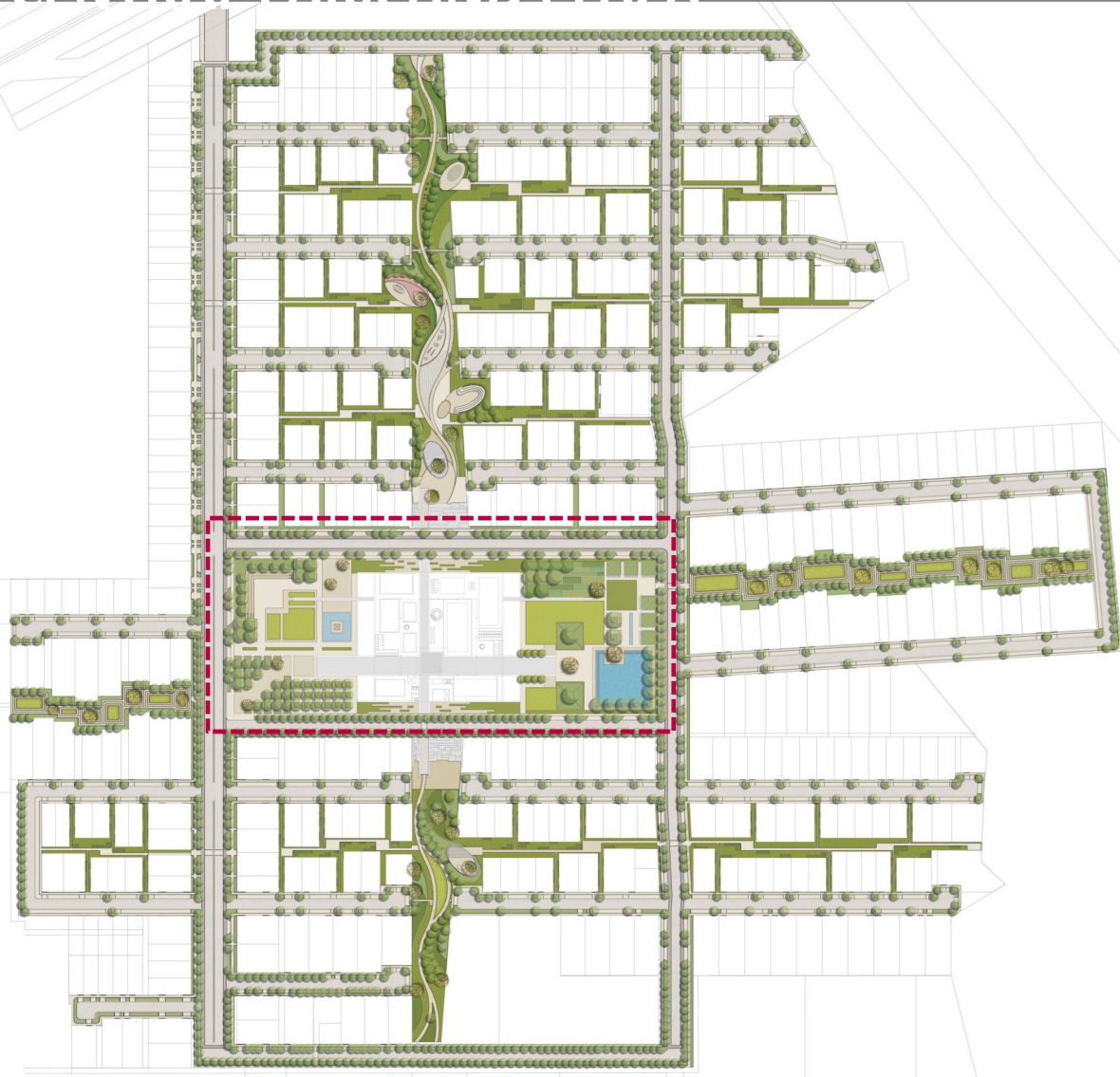


## VISUAL REFERENCES



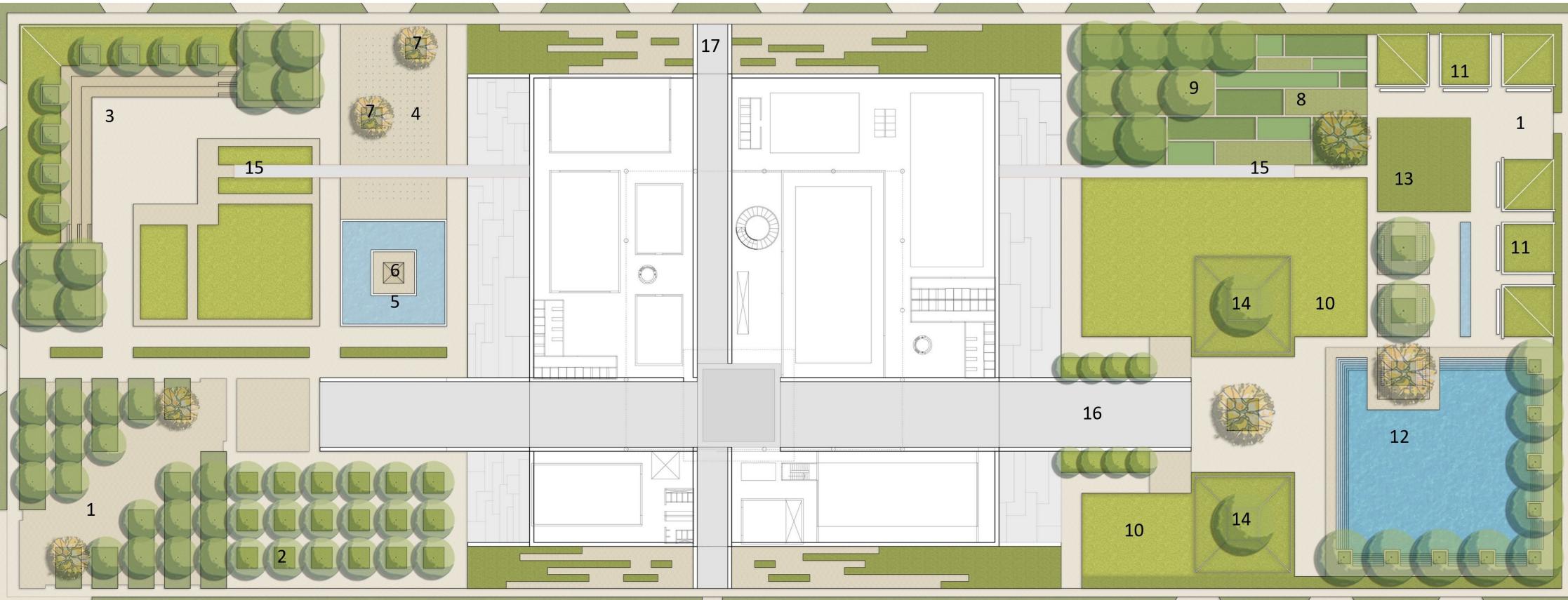


# CENTRAL PARK AND PLAZA





# CENTRAL PARK AND PLAZA



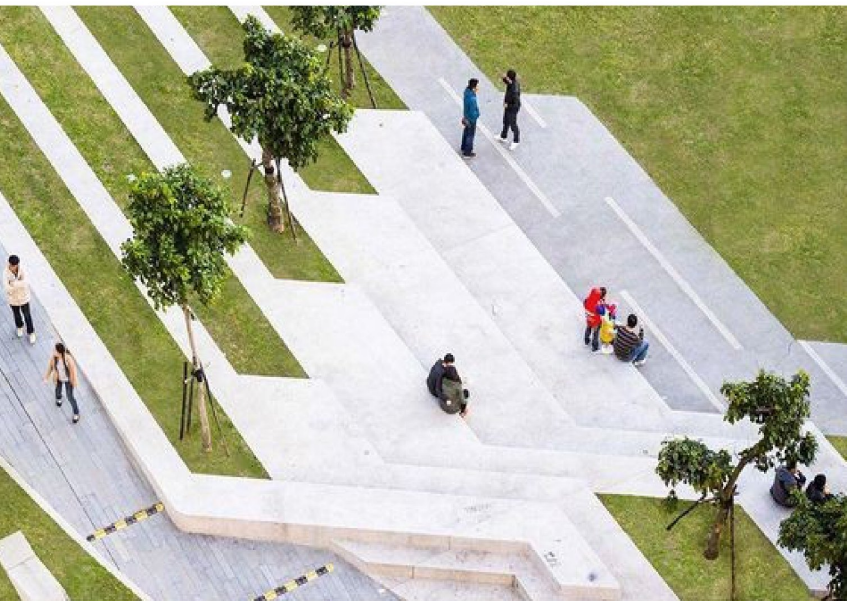
1. Entrance Plaza
2. Tree Plaza
3. Amphitheatre
4. Water Jet Plaza
5. Placemaking Water feature
6. Placemaking Tower

7. Planter with Seats
8. Community Farm
9. Community Orchard
10. Lawn
11. Berm Seating
12. Kund

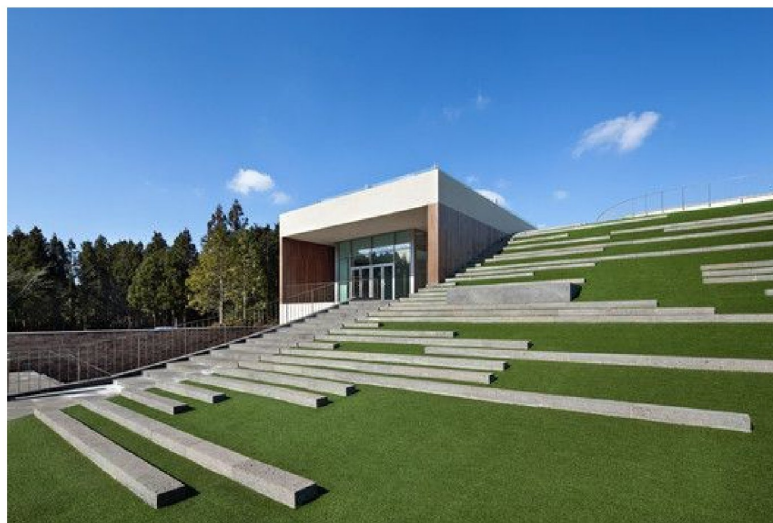
13. Flower Garden
14. Angular Berms
15. Club Ramp
16. Surya Line
17. Suma Line



# VISUAL REFERENCES



Amphitheatre





# VISUAL REFERENCES





## VISUAL REFERENCES



Angular Berms



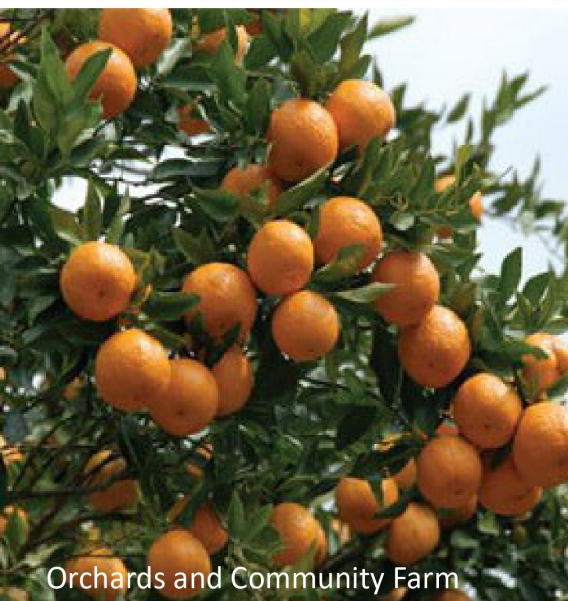


# VISUAL REFERENCES





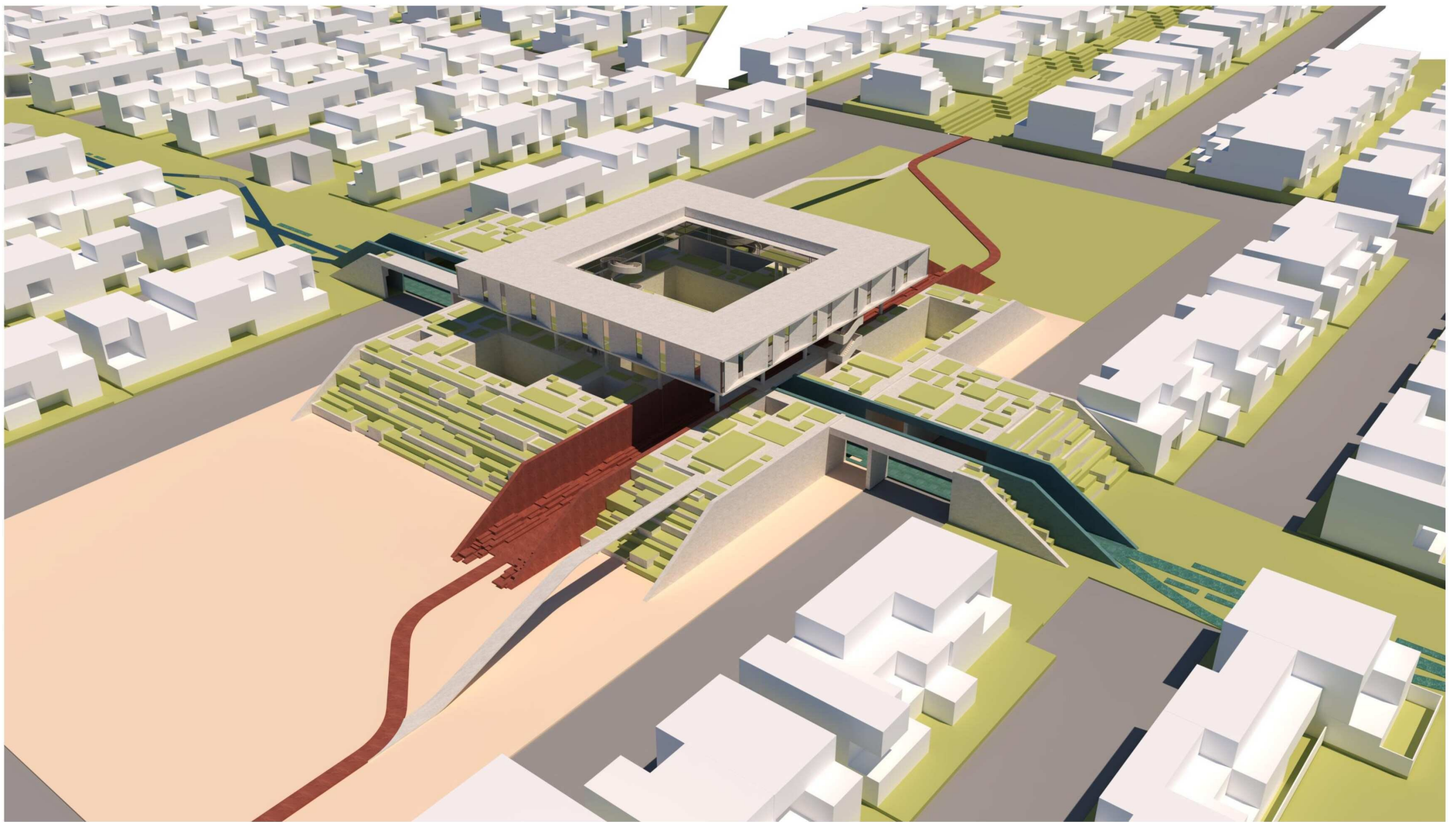
# VISUAL REFERENCES



Orchards and Community Farm







Unitary Design Studio





Unitary Design Studio







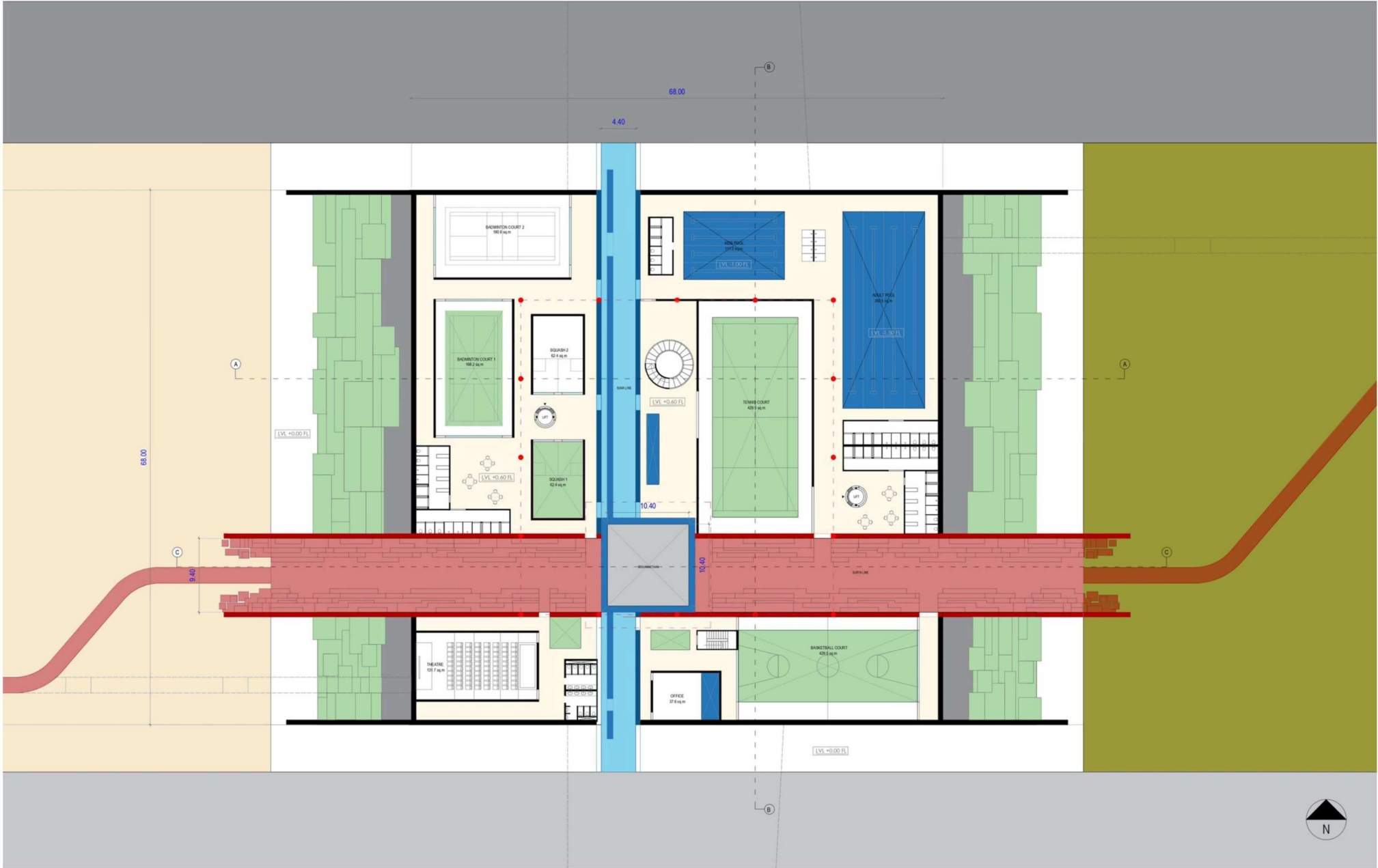


Unitary Design Studio























# COMMERCIAL GROUND FLOOR PLAN



## LEGEND

- SERVICES
- CIRCULATION (CORRIDORS)
- FOOD COURT & CENTRAL CORE
- SHOPS TYPE - C (8 NOS)
- SHOPS TYPE - A (10 NOS)
- SHOPS TYPE - A' (8 NOS)
- SHOPS TYPE - B (6 NOS)
- SHOPS TYPE - E (3 NOS)
- SHOPS TYPE - D (4 NOS)
- SPECIAL SHOPS
- THEATRE
- PARKING - 98 NOS

















# PROJECT USP<sub>s</sub>

Clubhouse designed with multiple indoor & outdoor elements following the natural incline levels to suit audiences of all ages with various activities.

First project in North India designed with Bioclimatic Architecture.

Controlled Air Flow for Maximum Ventilation.

Backyard for every villa.

Separate roads for pedestrians and vehicles - pioneering safety for children and the elderly.

First Township to have 600 mtrs. approx.  
Long pedestrian spine without any vehicular interference.

Low density Project.

North India's First Largest The art of Living Ashram.





# FEATURES & AMENITIES



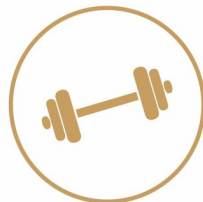




# HEALTH



MEDITATION &  
YOGA PLACE



GYMNASIUM



SWIMMING  
POOL



CYCLE  
TRACK



JOGGING  
TRACK





# EMERGENCY



FIRE FIGHTING  
VAN



FIRE FIGHTING  
SECURITY



DISPENSARY



24x7  
AMBULANCE





# CLUB HOUSE



RESTAURANT



LIBRARY



WORKSPACE



MINI  
THEATRE



MULTIPURPOSE  
PARTY HALL





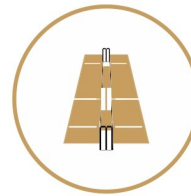
# OUTDOOR/INDOOR GAMES



TENNIS  
COURT



BASKETBALL



CRICKET  
PRACTICE PITCH



BADMINTON



TABLE  
TENNIS



GOLF PUTTING  
AND CHIPPING



SQUASH  
COURT





## OTHER AMENITIES



KIDS  
ZONE



AUTOMATIC  
CAR WASH



DRIVER'S  
DORMITORY



SENIOR  
LIVING SUPPORT



SCHOOL BUS  
WAITING STOP



PET'S ZONE



GATED  
COMMUNITY





# ADVANCED AMENITIES



24x7  
WATER SUPPLY



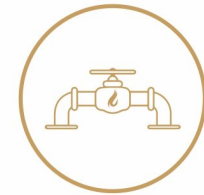
24x7  
ELECTRICITY  
SUPPLY



RAINWATER COLLECTORS  
AND HARVESTING

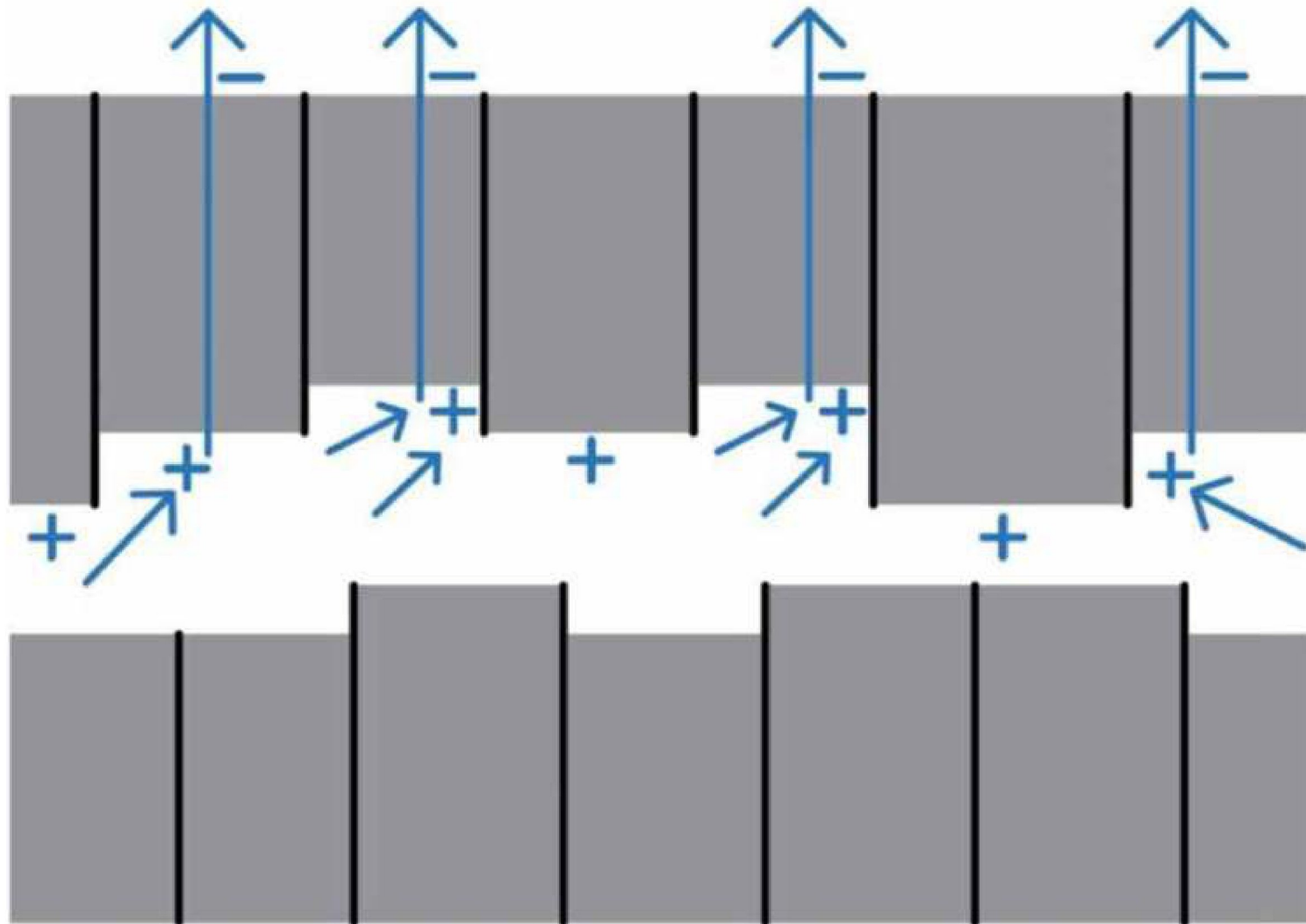


UNDERGROUND  
WIRING

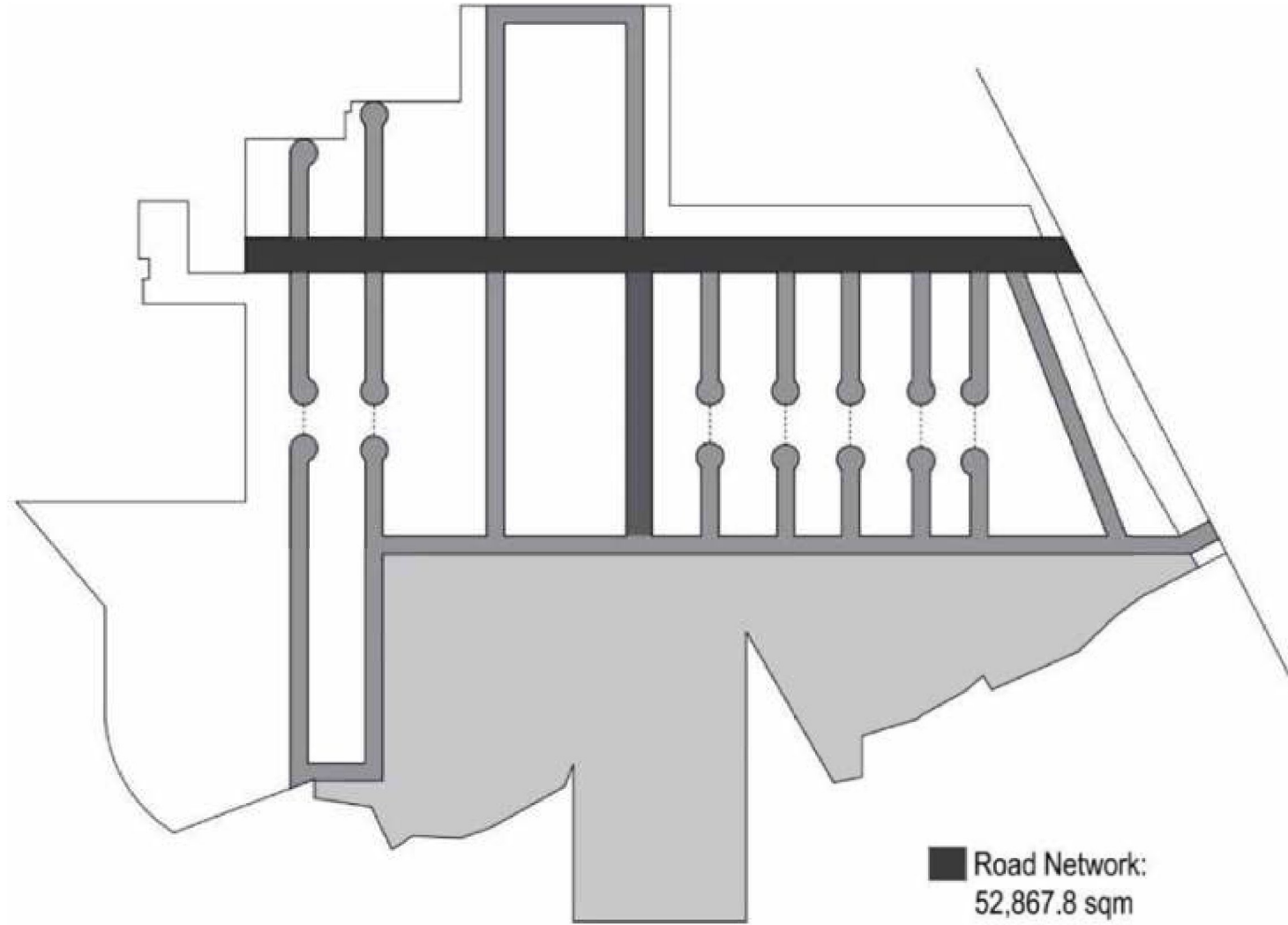


UNDERGROUND  
GAS PIPELINE



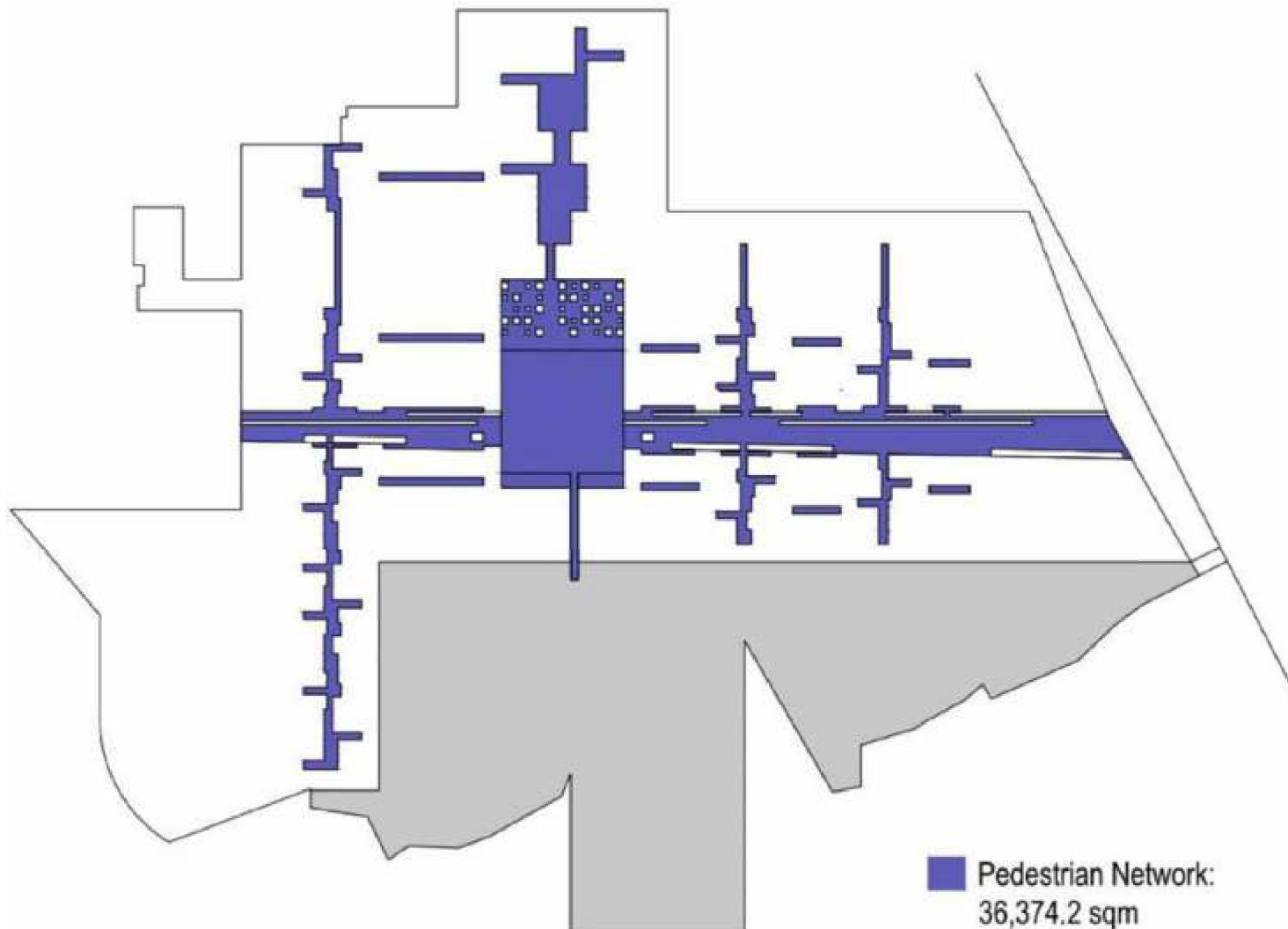




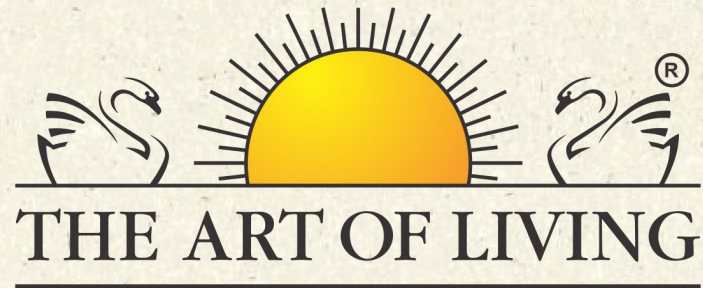


■ Road Network:  
52,867.8 sqm









The Art of Living is more of a principle, a philosophy of living life to its fullest. It is more a movement than an organization. Its core value is to find peace within oneself and to unite people in our society - of different cultures, traditions, religions, nationalities and thus reminding us all that we have one goal to uplift human life everywhere.





**FIND YOUR SPACE WITH US**

**PLPB.<sup>®</sup>**

Developing Sustainable Communities

Architectural Presentation for Training Purpose Only.