

presenting

CELESTIA GRAND
PREMIER

G+4 Independent Floors

**OPEN GREEN SPACES,
CHISELED TO
PERFECTION!**

- 2 Unit on Each floor
- Cross Ventilation in Every Floor
- Limited Edition
- High-Speed Lift
- Dedicated Car Parking
- Lush Green Area
- 3 Tier Security
- Gated Community
- Operational Club
(Part of Integrated Township Project)
- 24Hrs Water Supply and Power backup
- Mall & Multiplex (Near By)
- Hi-Street
- Affluent 4000 Residing
(Part of Integrated Township Projects)
- Community Living

*Amenities/Facilities are the part of Omaxe Royal Residency



SPACE & CONCEPT – AN ODE TO PREMIUM LIFESTYLE!

(Amenities/Facilities are part of the Integrated Township)

- Royal Club
- Restaurant, Cafeteria & Banquet
- Card Room
- Snooker Table
- Hi-Tech Gymnasium
- Basketball
- Table Tennis and Lawn Tennis
- Play Area for Children
- Aerobics Centre / Yoga Room
- Swimming Pool
- Indoor/Outdoor Badminton Court
- 2 Squash Court
- Community Living
- Gardens, Parks & Jogging Pathways
- Well-Ventilated Luxury of Space

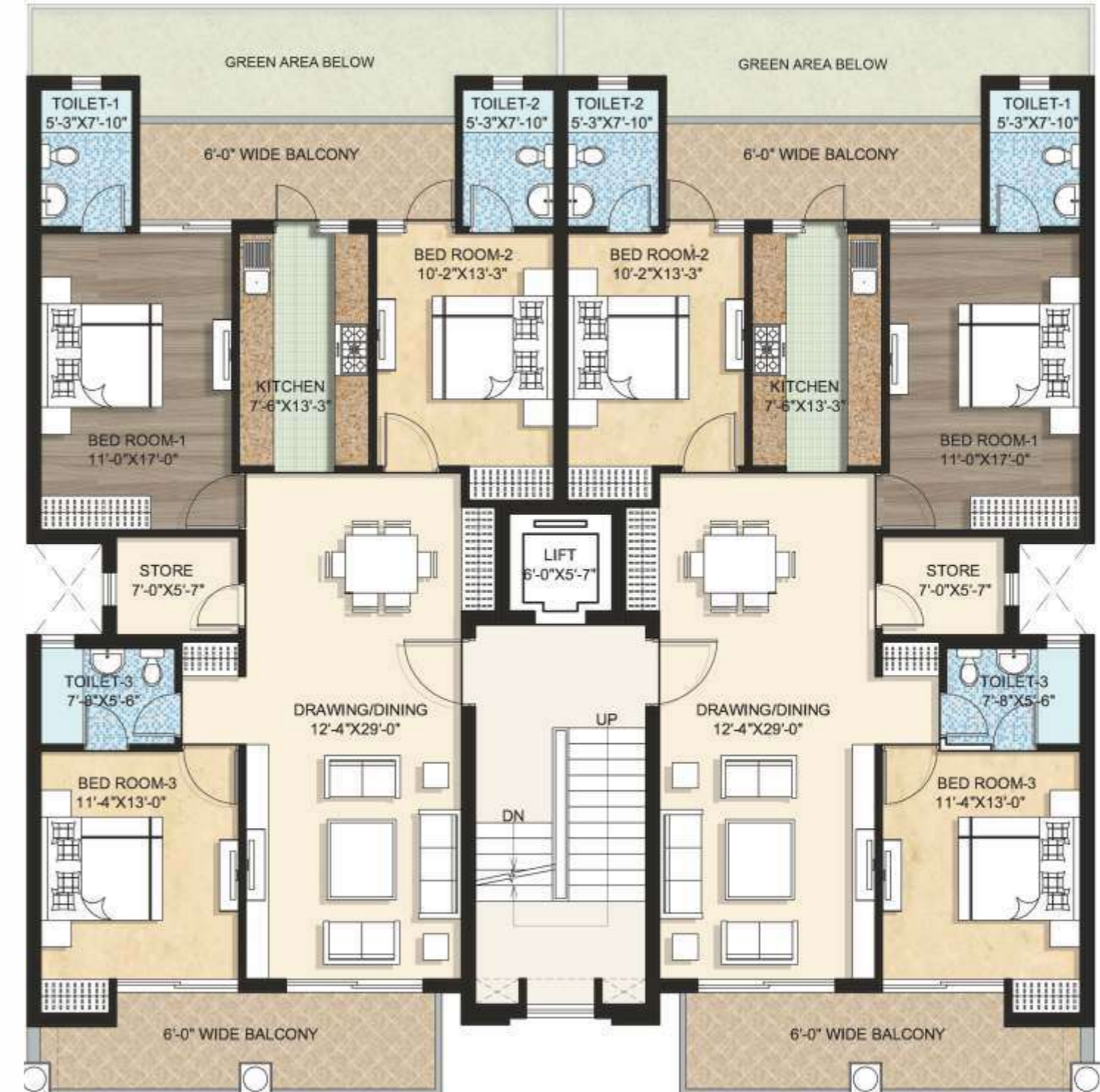
3 BHK - (BLOCK 1-5)

3 BHK - (BLOCK 1-5)



UNIT-1
GROUND FLOOR PLAN

Saleable Area: 1750 Sq.ft., 162.5803 Sq.mtr.
Built-up Area: 1549 Sq.ft., 143.9068 Sq.mtr.
Carpet Area: 1184 Sq.ft., 109.9972 Sq.mtr.



UNIT-1
TYPICAL FLOOR PLAN

Saleable Area: 1750 Sq.ft., 162.5803 Sq.mtr.
Built-up Area: 1549 Sq.ft., 143.9068 Sq.mtr.
Carpet Area: 1184 Sq.ft., 109.9972 Sq.mtr.

4 BHK - (BLOCK-1)

4 BHK - (BLOCK-1)



UNIT-1

GROUND FLOOR PLAN

UNIT-2

Saleable Area: 2170 Sq.ft., 201.5996 Sq.mtr.
Built-up Area: 1980 Sq.ft., 183.948 Sq.mtr.
Carpet Area: 1605 Sq.ft., 149.1094 Sq.mtr.

Saleable Area: 2250 Sq.ft., 209.0318 Sq.mtr.
Built-up Area: 2069 Sq.ft., 192.2164 Sq.mtr.
Carpet Area: 1681 Sq.ft., 156.17 Sq.mtr.



UNIT-1

TYPICAL FLOOR PLAN

UNIT-2

Saleable Area: 2170 Sq.ft., 201.5996 Sq.mtr.
Built-up Area: 1980 Sq.ft., 183.948 Sq.mtr.
Carpet Area: 1605 Sq.ft., 149.1094 Sq.mtr.

Saleable Area: 2250 Sq.ft., 209.0318 Sq.mtr.
Built-up Area: 2069 Sq.ft., 192.2164 Sq.mtr.
Carpet Area: 1681 Sq.ft., 156.17 Sq.mtr.

4 BHK (BLOCK-2, 3, 6, 7)

4 BHK (BLOCK-2, 3, 6, 7)

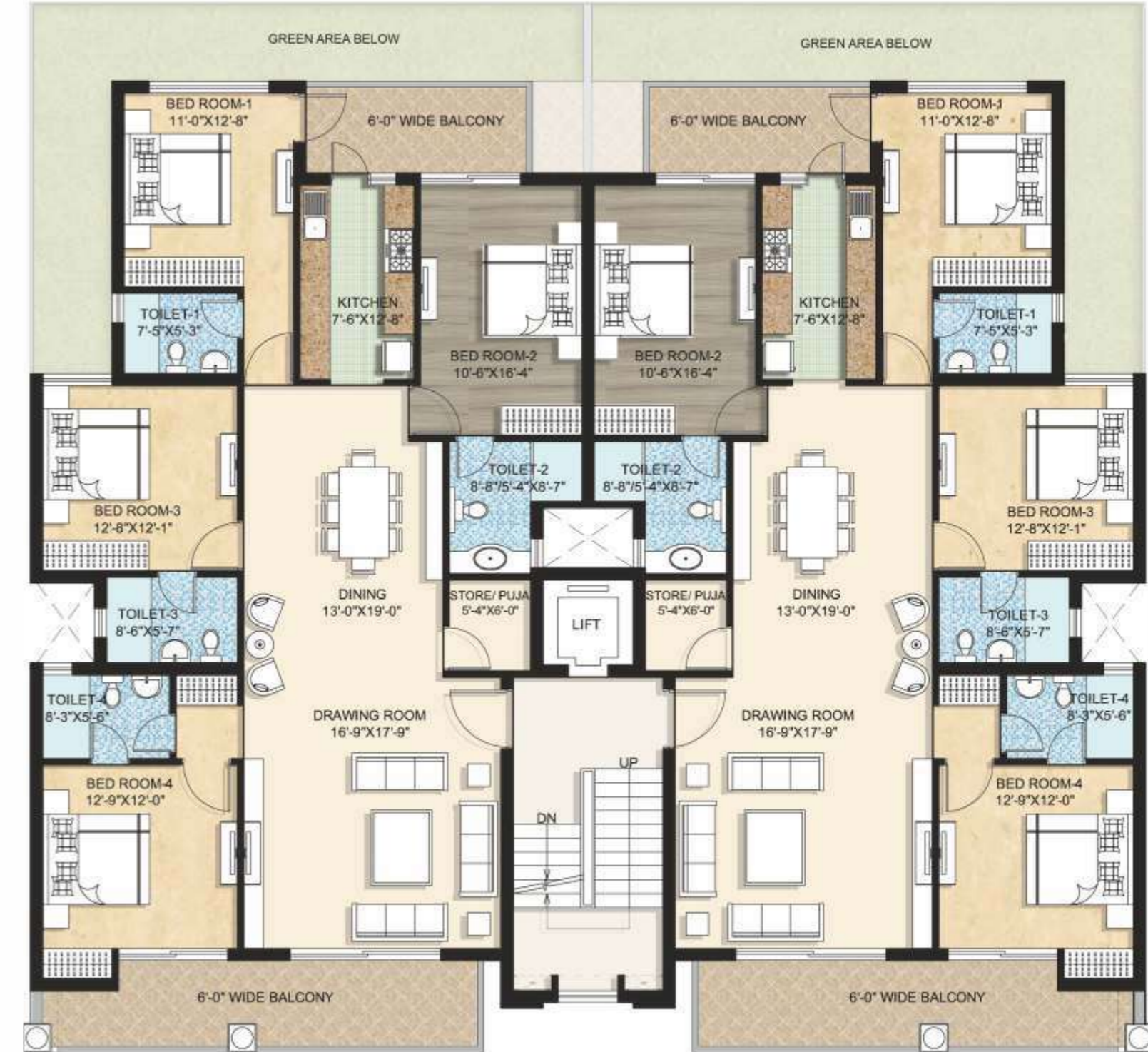


UNIT-1

GROUND FLOOR PLAN

UNIT-2

Saleable Area: 2170 Sq.ft., 201.5996 Sq.mtr.
Built-up Area: 1980 Sq.ft., 183.948 Sq.mtr.
Carpet Area: 1605 Sq.ft., 149.1094 Sq.mtr.



UNIT-1

TYPICAL FLOOR PLAN

UNIT-2

Saleable Area: 2170 Sq.ft., 201.5996 Sq.mtr.
Built-up Area: 1980 Sq.ft., 183.948 Sq.mtr.
Carpet Area: 1605 Sq.ft., 149.1094 Sq.mtr.

4 BHK - (BLOCK- 4, 5)

4 BHK - (BLOCK- 4, 5)



UNIT-1

UNIT-2

GROUND FLOOR PLAN

Saleable Area: 2250 Sq.ft., 209.0318 Sq.mtr.
Built-up Area: 2069 Sq.ft., 192.2164 Sq.mtr.
Carpet Area: 1681 Sq.ft., 156.17 Sq.mtr.

Saleable Area: 2170 Sq.ft., 201.5996 Sq.mtr.
Built-up Area: 1980 Sq.ft., 183.948 Sq.mtr.
Carpet Area: 1605 Sq.ft., 149.1094 Sq.mtr.



UNIT-1

UNIT-2

TYPICAL FLOOR PLAN

Saleable Area: 2250 Sq.ft., 209.0318 Sq.mtr.
Built-up Area: 2069 Sq.ft., 192.2164 Sq.mtr.
Carpet Area: 1681 Sq.ft., 156.17 Sq.mtr.

Saleable Area: 2170 Sq.ft., 201.5996 Sq.mtr.
Built-up Area: 1980 Sq.ft., 183.948 Sq.mtr.
Carpet Area: 1605 Sq.ft., 149.1094 Sq.mtr.

4 BHK - (BLOCK- 8)



GROUND FLOOR PLAN



TYPICAL FLOOR PLAN

Saleable Area: 2250 Sq.ft., 209.0318 Sq.mtr.
Built-up Area: 1888 Sq.ft., 175.3995 Sq.mtr.
Carpet Area: 1515 Sq.ft., 140.7481 Sq.mtr.

STATELY & POISED...

